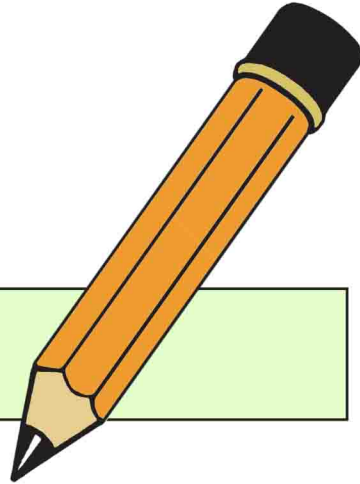
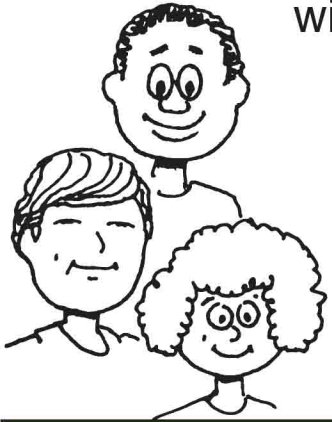


Whoever believes in Jesus
will have eternal life.



Trace the letters below.

Believe
in
Jesus.

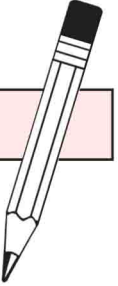
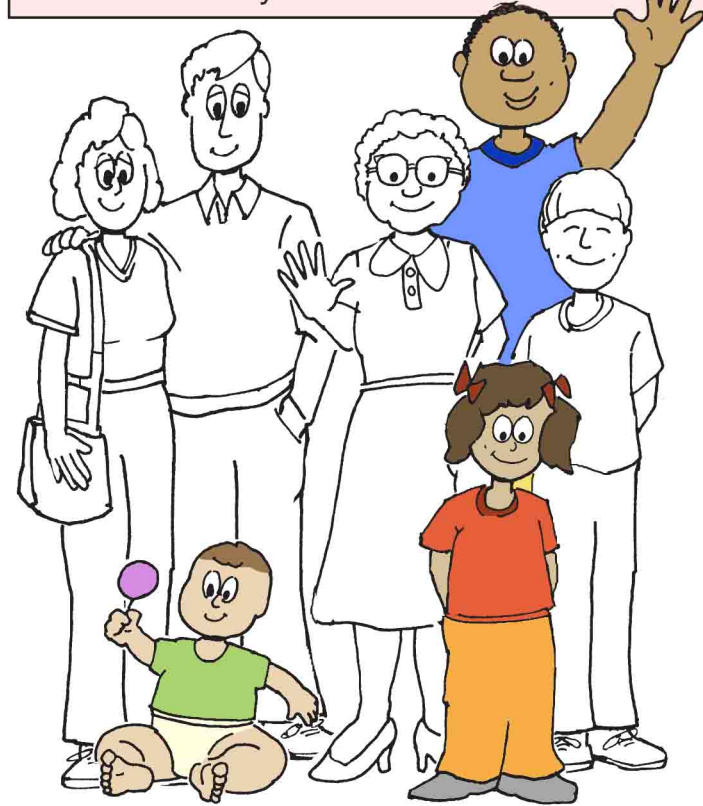
Ages 3+

March 10, 2024 • John 3:14-21

Light and Life

Jesus said that God loves
the people of the whole world.

Add yourself to this crowd.



St. James Lutheran Church

This Children's Worship Bulletin corresponds with the lessons
during this Sunday's Worship Service.

Print this weekly bulletin & play the games each week.

Visit our website: www.lutheranchurchcolumbusmt.org

Enter your **SECRET CODE** to unlock games @
games.childrensbulletins.com

SECRET CODE!
CPECE0

God sent Jesus to the world.

Circle the hidden objects.



Jesus is like a light for the world.

Connect the dots.
ABCDEFGHIJKL
1 2 3 4 5 6 7 8

