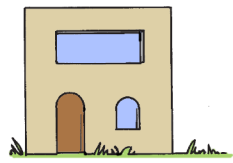
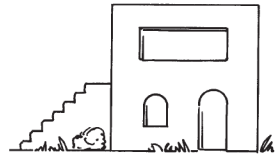


Joseph took Mary and Jesus back home, to the district of Galilee. What town did they settle in?

Write these words in alphabetical order in the shapes below. Write the letters from the circles in order on the lines at the bottom.

place      crown      -angel-      south  
apple      where      beach      azure

A	(N)	G	E	L
○	□	□	□	□
□	○	□	□	□
□	□	○	□	□
□	○	□	□	□
□	□	□	□	○
□	□	□	○	□
□	○	□	□	□



N \_\_\_\_\_

## Joseph Takes Mary and Jesus to Egypt

An angel appeared to Joseph in a dream. What was his message?

The words below are written backward, right to left. Rewrite them correctly on the lines.



ekat ,pu teG”  
dna dlhC eht  
rehtom siH  
ot epacse dna

doreH rof ,uoy llet I litnu ereht yatS .tpygE  
“miH llik ot dlhC eht rof hcraes ot gniog si

“ \_\_\_\_\_ , \_\_\_\_\_  
\_\_\_\_\_  
\_\_\_\_\_  
\_\_\_\_\_”

### St. James Lutheran Church

This Children's Worship Bulletin corresponds with the lessons during this Sunday's Worship Service.

Print this weekly bulletin & play the games each week.

Visit our website: [www.lutheranchurchcolumbusmt.org](http://www.lutheranchurchcolumbusmt.org)

Enter your **SECRET CODE** to unlock games @ **games.childrensbulletins.com**

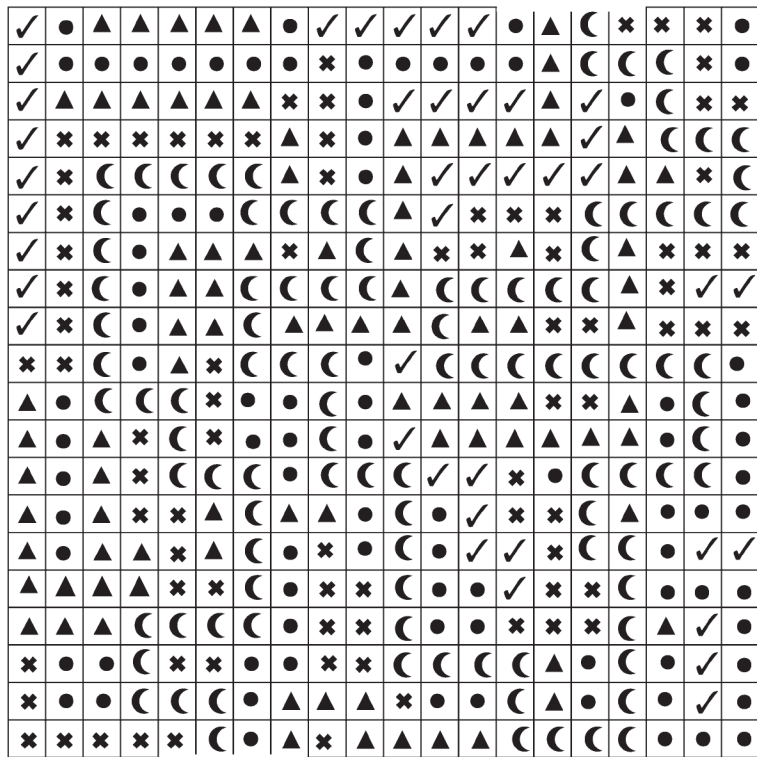
**SECRET CODE**  
**CQP028**

Joseph took Mary and Jesus by night to Egypt.

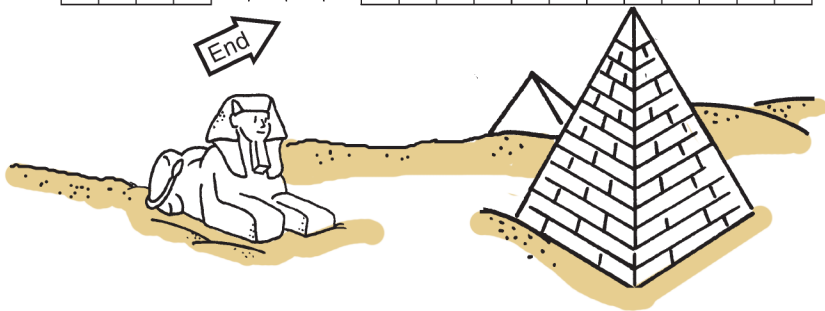
Find the path of shapes that reaches Egypt. You may make only straight moves, no diagonal ones.



Begin



End



After Herod died, an angel of the Lord again appeared to Joseph in a dream. What did the angel say this time?

Use this list to add the missing parts to the words below.

wh\_\_\_    we\_\_\_    \_\_\_et    \_\_\_nd  
 de\_\_\_    mo\_\_\_    Is\_\_\_    th\_\_\_  
 try\_\_\_    \_\_\_ke    ta\_\_\_    Chi\_\_\_  
 \_\_\_ld    u\_\_\_    \_\_\_fe    g\_\_\_

“G\_\_\_ \_\_\_p, \_\_\_ke the Chi\_\_\_ and His  
 \_\_\_ther and \_\_\_o to the la\_\_\_ of  
 \_\_\_rael, for \_\_\_ose \_\_\_o \_\_\_re \_\_\_ing  
 to ta\_\_\_ the \_\_\_ld’s li\_\_\_ are \_\_\_ad.”

